

SAFETY EQUIPMENT 12

SPARE PARTS FOR INFLATABLE JACKETS 12.02

SERVICING INFLATABLE JACKETS 12.02

LIFE JACKETS - FOAM FILLED

Standard Block (Level 100)	12.02
Coastal (Level 150)	12.02
Bambino (Level 100)	12.02
Seamaster (Level 100)	12.02
Nylon (Level 50S)	12.03
Cyclone (Level 50S)	12.03
Neoprene (Level 50S)	12.03
Nylon Dog Flotation Vests	12.05

LIFE JACKETS - INFLATABLE

REBEL 100 Junior (Level 100)	12.04
Pacific 150 (Level 150)	12.04
Waist Belt 100 (Level 100)	12.04
Offshore 150 (Level 150)	12.04
Ocean 150 (Level 150)	12.04
Offshore Pro (Level 150)	12.05
Commercial 200 (Level 150)	12.05

LIFE JACKETS ACCESSORIES & PARTS

Waist & Crutch Straps	12.04
Recharge Cylinders & Cartridges	12.05 - 12.06
Firing Indicators	12.05
Safety Whistle	12.06
Life Jacket Lights	12.06

SAFETY EQUIPMENT

Safety Line	12.06
LED Distress Signal Light	12.06
Lifebuoy Lights	12.06
Lifebuoys	12.07
Lifebuoy Holders	12.07
Emergency Cut Off Switches	12.07
Fire Extinguishers	12.07
Buckets & Scoops	12.08
Binoculars	12.08
Signal Air Horn	12.08
Offshore Flare Kit	12.08
Torches	12.08
Waterproof Bags	12.09
Boat Buoyancy Foam (EPE)	12.09



Spare Parts for Inflatable Jackets

• Quick go to guide for replacement parts for AXIS lifejackets.

Part No.	Type	CO ² Cylinder	Inflator Cartridge	UML Clip Indicator
JPW7516	Rebel 100 Junior Manual	JPW7550	-	JPW7566
JPW7517	Rebel 100 Junior Auto	JPW7550	JPW7556	JPW7565
JPW7530	Waist Belt 100 Manual	JPW7550	-	JPW7573
JPW7500	Pacific 150 Manual	JPW7551	-	JPW7566
JPW7501	Pacific 150 Auto	JPW7551	JPW7556	JPW7565
JPW7475 - 78	Offshore 150 Manual	JPW7551	-	JPW7566
JPW7481	Ocean 150 Auto	JPW7551	JPW7556	JPW7565
JPW7505	Offshore Pro 150 Hammar Auto	Included with cartridge	JPW7558	-
JPW7526	Commercial 200 Auto	JPW7552	JPW7556	JPW7565
JPW7527	Commercial 200 Hammar Auto	Included with cartridge	JPW7559	-

Servicing Inflatable Jackets

All AXIS Jackets can be returned for service requirements.

- All freight costs will be at jacket owner's expense.
- **JPW7570** - Plastic service tag used to keep track of service schedules for inflatable jackets used in commercial environments.



Part No.	Type
JPW7569	Full Service (excluding parts)
JPW7570	Inflatable Jacket Commercial Service Tag

Standard Block Level 100 Jackets - Adult and Junior

Block jacket that is split at the front and head hole for easy donning.

- Multi-fit adult or junior size.
- Nylon outer fabric with closed cell foam inner flotation.
- Reflective tape whistle and webbing belt with snap-lock buckle.
- Child range fitted with crotch straps to ensure the child does not fall through.
- Meets AS4758 Australian Standards.



Part No.	Size	Weight Range (kg)
JPW7401	Adult Multi-fit	40 - 70+
JPW7402	Junior	15 - 40



Coastal Level 150 Life Jackets

Approved for use in coastal waters on commercial vessels. Suitable for adults 40kg and over. Square design for compact storage.

- Closed cell foam encased in a tough nylon rescue orange material for good buoyancy and better visibility.
- Includes pea-less whistle, reflective tape, light attachment point and securing straps.
- Uniform Shipping Law compliant for use nationally.
- Meets AS4758 Australian Standards.



Part No.	Size	Weight Range (kg)
JPW7400	Adult Multi-fit	40 - 70+



BAMBINO Level 100 Foam Child Jackets

For children between 1-4 years. Comfortable and snug fit with a large buoyant collar, reflective patches and a lifting handle plus two 25mm straps to keep the child secure.

- Wide neoprene crutch support prevents the child from falling out of the jacket.
- Meets AS4758 Australian Standards.



Part No.	Size	Weight Range (kg)
JPW7405	XXS Child	5-10
JPW7403	XS Child	10-15
JPW7404	S Child	15-25



SEAMASTER Level 100 Foam Jackets

Internal EPA foam and nylon material outer shell for lightweight comfort.

- Child range fitted with crotch straps to ensure the child does not fall through.
- Meets AS4758 Australian Standards.



Part No.	Size	Weight Range (kg)	Crotch Strap
JPW7407	XS Child	10-15	Yes
JPW7408	Child	15-25	Yes
JPW7415	S Junior	15-40	No
JPW7409	Junior	25-40	No
JPW7410	S Adult	40-60	No
JPW7411	M Adult	70+	No
JPW7412	L Adult	70+	No
JPW7413	XL Adult	70+	No

Nylon Life Jackets Level 50S - Child



Great looking nylon PFD, suitable for most watersports.

- Multi-layered foam for comfort and ideal fitting.
- Features three adjustable belts.
- Meets AS4758 Australian Standards.



Part No.	Size	Weight Range (kg)	Colour	Crutch Strap
JPW7380B	4 - 6	15 - 25	Light Blue	Yes
JPW7380P	4 - 6	15 - 25	Pink	Yes
JPW7382B	8 - 10	15 - 25	Light Blue	No
JPW7382P	8 - 10	15 - 25	Pink	No
JPW7384B	12 - 14	25 - 40	Light Blue	No
JPW7384P	12 - 14	25 - 40	Pink	No

CYCLONE Nylon Life Jackets Level 50S



Basic multi-fit, lightweight nylon vests available in either red or blue.

- Meets AS4758 Australian Standards.



Part No.	Size	Weight Range (kg)
JPW7450	Child	15 - 25
JPW7451	Junior	25 - 40
JPW7452	S Adult	40 - 60
JPW7453	M-L Adult	60+
JPW7454	XL-XXL Adult	60+



Nylon Life Jackets Level 50S - Adult



Great looking nylon, suitable for most watersports.

- Multi-layered foam for comfort and an ideal fit.
- Features three adjustable belts.
- Meets AS4758 Australian Standards.



Part No.	Size	Weight Range (kg)	Colour
JPW7386B	XS Adult	40 - 60	Blue
JPW7386P	XS Adult	40 - 60	Pink
JPW7388B	S Adult	40 - 60	Blue
JPW7388P	S Adult	40 - 60	Pink
JPW7390B	M Adult	60+	Blue
JPW7390G	M Adult	60+	Grey
JPW7392B	L Adult	60+	Blue
JPW7392G	L Adult	60+	Grey
JPW7394B	XL Adult	60+	Blue
JPW7394G	XL Adult	60+	Grey
JPW7396B	XXL Adult	60+	Blue
JPW7396G	XXL Adult	60+	Grey

Neoprene Life Jackets Level 50S



Multi-layered inner foam with neoprene exterior for superior comfort. Great for waterskiing, jetskiing, canoeing and most watersports in enclosed sheltered waters.

- Available in a range of attractive colours.
- Two adjustable waist straps.
- Meets AS4758 Australian Standards.



To define life jacket colour option add letter after part number (ie: JPW7418B = S Child Blue jacket)

Part No.	Size	Weight Range (kg)	Colour Options
JPW7418	S Child	10 - 15	Blue, Green, Pink or Yellow
JPW7419	Child	15 - 25	Blue, Green, Pink or Yellow
JPW7420	Junior	25 - 40	Blue, Green, Pink or Yellow
JPW7421	Junior +	25 - 60	Blue, Green, Pink or Yellow
JPW7422	XS Adult	40 - 70	Blue, Green, Pink or Yellow
JPW7423	S Adult	60 - 70+	Blue, Green, Pink or Yellow
JPW7424	M Adult	70+	Blue, Green or Yellow
JPW7425	L Adult	70+	Blue, Green or Yellow
JPW7426	XL Adult	70+	Blue, Green or Yellow
JPW7427	XXL Adult	70+	Blue, Green or Yellow



REBEL 100 Junior Inflatable Jackets - Manual and Automatic

Gives freedom of movement and comfort for young boaters 25-50kg.

- Soft neoprene collar with tough 600-denier cover.
- Velcro closure and removable crotch strap.
- **Manual Jacket:** UML Mini Manual operating system.
- **Automatic Jacket:** UML Mk5 Automatic operating system.
- Meets AS4758 Australian Standards.



Part No.	Type	Colour
JPW7516	Manual	Red
JPW7517	Automatic	Red

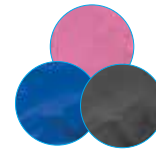
OFFSHORE 150 Inflatable Jackets - Manual

Our most popular inflatable jacket. Full length, generously sized, manually inflated and suitable for all adults. Lightweight with tough 600-denier outer cover with velcro closure and comfortable neoprene collar.

- UML Mini Manual pull cord inflation system - gas cylinder with back-up oral inflation tube.
- Reflective tape patches.
- Meets AS4758 Australian Standards.



Part No.	Colour
JPW7475	Red
JPW7476	Grey
JPW7477	Blue
JPW7478	Pink



Other colours available

Manual cord

PACIFIC 150 Inflatable Jackets - Manual and Automatic

Very lightweight, basic model multi-fits all adults, tough outer cover with velcro closure.

- Ergonomic design with neoprene collar.
- **Manual Jacket:** UML Mini Manual operating system.
- **Automatic Jacket:** UML Mk5 Automatic operating system.
- Meets AS4758 Australian Standards.



Part No.	Type	Colour
JPW7500	Manual	Red
JPW7501	Automatic	Red



OCEAN 150 Inflatable Jacket - Automatic

Full length, generously sized and ideal for use on yachts or powerboats.

- Auto-inflation - UML pro-sensor with window for visual status of arming.
- Zip-front pocket/reflective tape patches.
- Strong buckle with self-adjusting belts.
- 600 denier outer and velcro closure.
- Neoprene neck lining.
- 38mm wide webbing on waist, shoulder and grab straps.
- Meets AS4758 Australian Standards.



UML Pro Sensor window

Manual cord

Part No.	Colour
JPW7481	Red/Grey



WAIST BELT 100 Inflatable Jacket - Manual

Ultra lightweight compact jacket inclosed in a waist belt bag for maximum movement and comfort whilst boating or fishing. Suits most average sized adults. *Only classed as a PFD when worn over the head - not when still packed in the waist belt pouch.*

- UML Micro Manual pull cord inflation system - gas cylinder with back-up oral inflation tube.
- Reflective tape and whistle with lanyard.
- Meets AS4758 Australian Standards.



Part No.
JPW7530



Life Jacket Waist Extension Straps

Extension straps adds 30cm to the length of the belt.



JPW7582

JPW7583

Part No.	Buckle	Suits Jackets
JPW7582	SS40	Ocean 150
JPW7583	Button	Offshore 150 & Pacific 150



Life Jacket Crotch Straps

Webbing belt with soft neoprene comfort cover and snap buckles.

Part No.	Type
JPW7487	Junior Foam
JPW7488	Junior - Inflatable
JPW7489	Adult - Inflatable



OFFSHORE PRO 150 HAMMAR - Automatic



Unique HAMMAR MA1 hydrostatic inflation operating system requires water pressure for activation - suited to extremely wet conditions. An ergonomic design fits all adults with a tough 600-denier outer cover, soft neoprene collar, plus reflective piping for better night time visibility.



UML Pro Sensor window

- Velcro closure.
- D-buckle fitted at back, for optional crotch strap.
- Meets AS4758 Australian Standards.

Part No.	Colour
JPW7505	Black/Grey



Universal Inflatable PFD Recharge Kit

Suits almost all inflatable jackets on the market, using UML (English) or Halkey Roberts (USA) inflation system.

- Includes 3 different safety clips.

Part No.	Size (g)	Thread Size
JPW7485	33	1/2" UNF



Inflatable Life Jacket CO² Cylinders

Suits most inflatable jackets on the market.

Part No.	Size (g)	Thread Size	Buoyancy
JPW7546	25	3/8" UNF	100
JPW7547	38	3/8" UNF	190
JPW7550	25	1/2" UNF	100
JPW7551	33	1/2" UNF	150
JPW7552	38	1/2" UNF	190



COMMERCIAL 200 Inflatable Jackets - Automatic or HAMMAR



Designed for the workplace with a hi-viz, flame retardant, anti-static lightweight outer cover. The HAMMAR automatic inflation system is suited to extremely wet conditions and requires water pressure for activation.



Window shows arming status

- 300 Denier - conductive fabric: 98% Polyester, 2% carbon anti-static.
- Easy to open zip closure.
- Optional crotch strap available.
- AS1906 4:2010 compliant hi-viz material.
- EN 533 Approved - protection against heat and flame.
- Meets AS4758 Australian Standards.

Part No.	Inflation	Operating System
JPW7526	Automatic	UML Pro-Sensor
JPW7527	HAMMAR	MA1 Hydrostatic



Replacement UML Auto Jacket Inflator Cartridge

For use with UML inflators.

- Requires a replacement gas cylinder - sold separately.

Part No.	Type	Firing Clips
JPW7556	Blister Pack	Yes



Replacement UML Pro Sensor Elite Auto Jacket Inflator Cartridge

For use with UML Pro-Sensor Elite inflators.

- Requires a replacement gas cylinder - sold separately.
- Bulk buy without firing clips.

Part No.	Type	Firing Clips
JPW7579	Blister Pack	Yes
JPW7572	Bulk	No



Nylon Dog Flotation Vests



Perfect for your best friend, includes a handle for easy retrieval.



Part No.	Size	Weight Range (kg)	Chest Size (cm)
JPW7490	Small	Up to 4.5	22-35
JPW7491	Medium	4.5 - 16	35-60
JPW7492	Large	16 - 34	60-91

Inflatable PFD Firing Indicators

Firing indicator clips to suit inflatable jackets.

- UML Mini and Micro firing indicators available in blister packs of 5.



Part No.		Description
Single	Pack of 5	
JPW7565	-	UML MK5 'New Style'
JPW7566	JPW7568	UML Mini
JPW7573	JPW7574	UML Micro



JPW7568

Re-Charge Cylinder Kits for HAMMAR Inflatable Life Jackets

Re-arming kits will fit all automatic jackets that use the HAMMAR MA-1 type (hydrostatic) inflator.



Part No.	Description
JPW7558	Recharge Kit with 33g gas cylinder
JPW7559	Recharge Kit with 38g gas cylinder
JPW7560	Recharge Kit with 60g gas cylinder

Safety Whistle

Plastic pea-less whistle in orange safety colour, complete with jacket attachment clip and hole for a lanyard.



Part No.
JPW1117

Safety Line 8mm x 30m

Easy to use safety line bag, 30m long PE braided line with plastic handle. All components float and are brightly coloured for easy lifesaving.

- Enclosed counterweight to assist with throwing.
- Compact to take with you anywhere.



Part No.
JPW1118

Bracket for Safety Line

Stainless steel bracket only for Safety Line above with an adjustable rail mount.

- Suits rail diameters 18mm to 27mm.
- Four different mounting angles.



Part No.
JPW1119

Life Jacket Light SOLAS

Suitable for all lifejackets - automatically activates when the sensor makes contact with water. SOLAS approved 0474/11.

- Can be activated manually.
- Oral tube mount bracket supplied.



Part No.	Dimensions L x W x H (mm)
JPW7486	45 x 19 x 31

Rescue Flare LED Distress Signal Light

This portable device will continue to output an SOS light signal for at least 20hrs with a visual distance up to 10km.

- Approved to WA Standards (meets regulation 52B).
- Light intensity: > 75cd.
- Manual activation.
- Floats.
- Includes daytime distress flag.



Part No.	Size (mm)
JPW11021	205 x 60



SOLAS Water Activated Lifebuoy Light

A lithium battery-powered man overboard emergency light to be installed onto a lifebuoy. Automatically activated when dropped into water and will flip upwards, outputting a flashing white light for at least 24hrs.

- Fire-resistant, oil-resistant, mould-proof, corrosion-proof and water-proof.
- Far exceeds SOLAS requirements.
- Installation clip included.
- Light intensity: > 2cd.
- Floats.



Part No.	Size (mm)
JPW11022	124 x 90



Mini SOLAS Water Activated Lifebuoy Light

An alkaline battery-powered man overboard emergency light to be installed onto a lifebuoy. It has the features as the standard model above, but is more compact and lightweight.

- Twist to "AUTO" for gravity and water sensors double activation.
- Installation clip included.



Part No.	Size (mm)
JPW11023	144 x 90



SOLAS Water Activated Life Jacket Light

A lithium battery-powered emergency light to be installed on all kinds of life jackets. Automatically activates when in contact with water and will continue to output a flashing white light for at least 28hours.

- Fire-resistant, oil-resistant, mould-proof, corrosion-proof and water-proof.
- Can manually turn on/off while in water.
- Far exceeds SOLAS requirements.
- Light intensity: Min 0.75cd.
- Floats.



Part No.	Size (mm)
JPW11024	62 x 28 x 31.5

SOLAS Round Lifebuoys

Foam filled orange plastic lifebuoys with reflective tape and poly rope.

- SOLAS approved for all commercial and pleasure craft in Australian or International waters.
- Heavier 4.3kg weight ring is required for automatic launching on larger ships.



Part No.	Internal Dia (mm)	External Dia (mm)	Weight (kg)
JPW1180	448	720	2.5
JPW1181	448	720	4.3

Horseshoe Lifebuoy

Flexible horseshoe lifebuoy with bright orange PVC zippered cover, closed cell foam inner, webbing traps with snap buckle, reflective tape and whistle.



Part No.	Diameter (mm)
JPW1183	600

Lifebuoy Holder - Rail Mount

316-grade stainless steel holder to suit round or horseshoe lifebuoys, includes rail mount bracket for 22mm and 25mm rails.

- Supplied with retaining cord.



Part No.
JPW4726

Lifebuoy Holder - Hooks

304-grade stainless steel adjustable retaining hook to suit round lifebuoys.

- Simply bend to adjust to desired size.
- Sold as a pair



Part No.
JPW4727

Emergency Cut Off Switch with Lanyard

Kills ignition when the coiled lanyard is pulled.

- Provides a normally 'open' or 'closed' circuit.
- For use with conventional or magneto ignitions.



Part No.
JPW12951

Boat Kill Switch - 10 Keys

Emergency cut-off switch is ideal for safety on the water and comes with coiled lanyard and 10 different keys.

- Kills ignition when lanyard is pulled.
- Swivel snap hook prevents tangles.
- Rust-free stainless steel crimps.



Part No.	Fits Engines
JPW12952	BRP, Johnson, Evinrude, Mercury, Yamaha, Honda, Tohatsu, Nissan, Suzuki and Kawasaki

Fire Extinguishers

Dry powder extinguishers compliant with Australian Standards AS 1841.5.

- Non-toxic and rated suitable for YA regulations.
- Complete with pressure gauge, service record tag and mounting bracket.

Suitable for:

Class A Fires: common combustibles such as wood, cloth, paper, rubber and plastics.

Class B Fires: flammable liquids, oil, solvents, grease, tars, petrol and other oil-based products.

Class E Fires: involve energised electrical equipment such as wiring, machinery equipment and appliances.



Part No.	Contains	Fire Rating
JPW1220	1kg	1A:20B:E
JPW1222	2.5kg	3A:40B:E
JPW1223	4.5kg	4A:80B:E
JPW1224	9kg	6A:80B:E
JPW1226	Bracket to suit 4.5kg Extinguisher	



JPW1226

Cadmium plated steel bracket for mounting 4.5kg fire extinguisher.

Galvanised Bucket

Galvanised bucket capable of holding 11 litres of liquid.

- Can be used as safety equipment for putting out fires or as a bailer.



Part No.

JPW1113

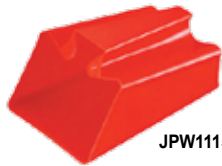
Bailing Scoops

Flexible red plastic bailers with hand grip.



JPW1116

Part No.	Capacity (L)	Dimension L x W x H (mm)
JPW1115	1.5	185 x 140 x 125
JPW1116	2	240 x 130 x 125



JPW1115

Waterproof Manual Focus Binocular - 7x50 Magnification

Waterproof / fog-proof black and yellow binocular for optimum reliability. Ergonomically designed with non-slip grip.

- 50mm diameter multi-coated green lenses.
- Super quality BAK-4 optics.
- 6.6° / 116m field of view with central eye focus and fold-down eye cups.
- Brighter, crisper images with 30% more light entering the binoculars.
- Includes binocular carry strap, lens cleaning cloth, eyepiece caps, lens caps and battery.



Part No.	Dimensions L x W (mm)	Eye Relief (mm)	Exit Pupil (mm)	Weight (g)
JPW9711	202 x 198	27.4	7	989

Mariner Pro Binocular With Compass - 7x50 Magnification

Fog-proof, dust-proof and waterproof with a rugged rubber-armoured metallic body. Features an integral internally illuminated compass and internal range finder.

- BAK-4 prism.
- O-ring sealed 100%.
- Distance scale.
- Right and left dioptre adjustment dial with individual focus.
- 5° resolution / 7.5° field of view.
- Includes binocular carry strap, lens cleaning cloth, eyepiece caps, lens caps and battery.



Part No.	Dimensions L x W (mm)	Eye Relief (mm)	Exit Pupil (mm)	Weight (g)
JPW9713	200 x 150	23	6.8	890

Signal Air Horn with 380ml Canister

Using ozone-friendly propellant to provide an outstanding long range of emergency communication (signal up to 1500m).

- No CFC emissions and non-flammable.
- Replacement cans available.



Part No.	Description
JPW5897	Signal Air Horn with 380ml Canister
JPW5898	Replacement 380ml cannister

Western Australia Offshore Flare Kit

For use in situations more than 5 nautical miles from shore.

- Packaged in a watertight clear bag.
- Includes: 2x Red Parachute Rocket and 2x Orange Hand Smoke.



Part No.

JPW1101

LED Waterproof Floating Torch

Similar to a mini "Dolphin" style torch with nine powerful LED's and cloverleaf reflector system for maximum focus and intensity.

- Easy grip handle and recessed push button switch.
- Four AA batteries supplied.

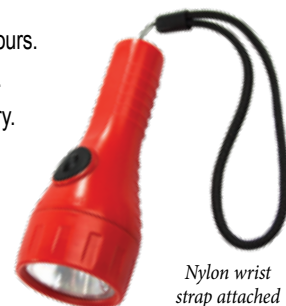


Part No.	Dimensions L x W x H (mm)
JPW11742	145 x 95 x 110

LED Waterproof Morse Signalling Torch

Compact pocket sized, battery-powered LED torch packed in a bright yellow waterproof storage box..

- 100% waterproof and floats.
- 200cd light intensity for over 12 hours.
- Meets ISO18813-2006 standards.
- Includes spare LED and AA battery.
- SOLAS approved.



Part No.

JPW1114

IP67

Nylon wrist strap attached

Safety Gear Bags



Durable heavy duty PVC woven bag with waterproof moulded EVA base. Can be used as a gear bag or safety grab bag.

- Inside mesh pocket and two zippered end pockets.
- Easy grip zipper on three sides of the bag for wide opening.
- Soft grip carry handle with large padded shoulder strap.



Part No.	Capacity	Colour	Dimensions (mm)
JPW7494	98L	Yellow	750 x 360 x 360
JPW7495	55L	Red	610 x 300 x 300

Waterproof Dry Bags with Adjustable Shoulder Strap

Tough and durable dry bag with roll down top and adjustable nylon shoulder strap, 100% waterproof once sealed correctly.

- Easy to clean - simply wipe with a wet soapy cloth.
- Made from 500 denier quality PVC.
- Colours may vary.



Part No.	Size
JPW5140	5L
JPW5141	10L
JPW5142	15L
JPW5143	20L

Boat Buoyancy Foam (EPE)

Marine Boat Buoyancy Foam, designed for use in boats, is manufactured under strict quality control to ensure a consistent and reliable product. Easy to modify, this foam can be cut with a knife, blade, hack saw, band saw and shaped around any hull fittings, designs and requirements.

- Resistant to fuel (petrol and diesel).
- Water absorption - 0.01ml/cm³
- Good thermal and acoustic properties.
- Sold in a pack of 10 sheets.



*Sold as a pack of 10 sheets equal to 1 cubic metre.
Priced per sheet.*

Part No.	Individual Sheet Dimensions (L x W x H)
JPW10022	2m x 1m x 50mm



HOW TO ORDER

Select products from the catalogue or through our website using the product categories or search function. Make note of the part numbers to facilitate ordering.

ONLINE



Login to our website
with your customer username & password.

www.jpwmarine.com.au

If you know our product codes, use the
'Quick Order' form for a speedy checkout.

PHONE

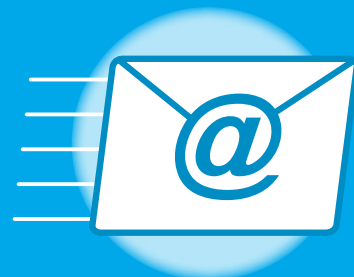


Call us during standard
Western Australian business hours on

(08) 6253 3000

to place order by phone.

EMAIL



Email your order to

orders@jpwmarine.com.au



JPW MARINE

WHOLESALE MARINE SPECIALISTS