

STEERING WHEELS 18

ULTRAFLEX

V32 (3 Spoke) 335mm	18.02
V33N (4 Spoke) 342mm.....	18.02
V45 (3 Spoke) 280mm	18.02
V52B (5 Spoke) 320mm.....	18.02
V57B (5 Spoke) 350mm.....	18.02
V70B (5 Spoke) 350mm.....	18.02

OTHER

Soft Grip (5 Spoke)	18.02
Stainless Steel (3 Spoke).....	18.03
Stainless Steel (3 Spoke) w/Speed Knob ...	18.03
Stainless Steel (5 Spoke)	18.03
Stainless Steel (5 Spoke) w/Speed Knob ...	18.03

ACCESSORIES

Control Knobs	18.03
Spares	18.03



Ultraflex V32 Steering Wheel Ø 335mm - 3 Spoke

Hard grip anti-shock wheel, suits smaller boats with mechanical or hydraulic steering.

- Thermoplastic anti-shock with hard grip.
- Fits a standard 3/4" tapered shaft.
- Supplied with a centre cap.



Part No.	Colour	Diameter (mm)
JPW18860	Black	335



Ultraflex V57B Steering Wheel Ø 350mm - 5 Spoke

Black polyurethane grip and stainless steel spokes.

- Non-magnetic, eliminates compass interference.
- Fits a standard 3/4" tapered shaft.
- Includes hub and stainless steel cap.



Part No.	Colour	Diameter (mm)
JPW18875	Stainless Steel / Black	350

Ultraflex V33N Steering Wheel Ø 342mm - 4 Spoke

Ideal for smaller boats with mechanical or hydraulic steering.

- Thermoplastic anti-shock with hard grip.
- Fits a standard 3/4" tapered shaft.
- Supplied with a centre cap.
- Available in two colours.



Part No.	Colour	Diameter (mm)
JPW18862	Black	342
JPW18897	Grey	342



Ultraflex V70B Steering Wheel Ø 350mm - 5 Spoke

Polyurethane grip and stainless steel spokes.

- Non-magnetic, eliminates compass interference.
- Fits a standard 3/4" tapered shaft.
- Supplied with centre hub and black cap.



Part No.	Colour	Diameter (mm)
JPW18878	Stainless Steel / Black	350

Ultraflex V45 Steering Wheel Ø 280mm - 3 Spoke

Thermoplastic anti-shock wheel featuring a soft-touch grip for smoother control.

- Fits a standard 3/4" tapered shaft.
- Supplied with a centre cap.



Part No.	Colour	Diameter (mm)
JPW18872	Black	280

Soft Grip Steering Wheel Ø 343mm - 5 Spoke

Stainless steel steering wheel with soft grip spokes.

- In-built hub fits a standard 3/4" tapered shaft.
- Supplied with a centre cap.



Part No.	Colour	Diameter (mm)
JPW19305	Stainless Steel / Black	343
JPW19304	Stainless Steel / Grey	343



Ultraflex V52B Steering Wheel Ø 320mm - 5 Spoke

Stainless steel five-spoke steering wheel featuring a strong polyurethane grip.

- Non-magnetic, eliminates compass interference.
- Fits a standard 3/4" tapered shaft.
- Includes hub and stainless steel cap.



Part No.	Colour	Diameter (mm)
JPW18877	Stainless Steel / Black	320

Steering Wheel with Speed Knob Ø 343mm - 5 Spoke

Stainless steel steering wheel with soft grip spokes and speed knob.

- Speed knob assists in quick rotations of the wheel.
- Fits a standard 3/4" tapered shaft.
- Supplied with a centre cap.



Part No.	Colour	Diameter (mm)
JPW19312	Stainless Steel / Black	343



Stainless Steel Steering Wheels - 3 Spoke

Highly polished 316-grade stainless steel with finger indents around rim for a comfortable grip. Flat 4mm thick center spokes connect to the outer rim.

- Supplied with highly polished stainless steel cap.
- In-built hub fits a standard 3/4" tapered shaft.

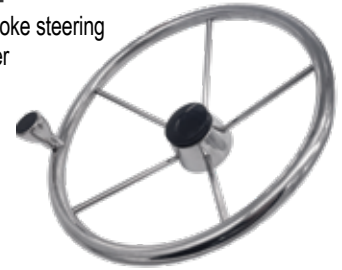


Part No.	Diameter (mm)
JPW19302	340
JPW19303	390

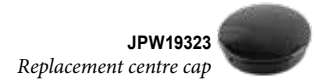
Stainless Steel Steering Wheel with Speed Knob Ø 457mm- 5 Spoke

316-grade stainless steel five-spoke steering wheel with speed knob and finger indents around rim.

- Supplied with black centre cap.
- In-built hub fits a standard 3/4" tapered shaft.



Part No.	Diameter (mm)
JPW19313	457



Stainless Steel Steering Wheels with Speed Knob - 3 Spoke

Highly polished 316-grade stainless steel three-spoke steering wheel with speed knob to assist with quick rotations of the wheel and finger indents around rim for a comfortable grip.

- Flat 4mm thick center spokes connect to the outer rim.
- Supplied with stainless steel cap.
- In-built hub fits a standard 3/4" tapered shaft.



Part No.	Diameter (mm)
JPW19300	340
JPW19301	390

Steering Wheel Control Knobs

316-grade stainless steel control knobs for faster and easier steering.

- For hydraulic, non-feedback and non-reversible systems only.



Part No.	Model	Fits Rim Size	
		(mm)	(in)
JPW19320	S2	20 - 25	3/4 - 1
JPW19321	S3	20 - 25	3/4 - 1

Stainless Steel Steering Wheels - 5 Spoke

Highly polished 316-grade stainless steel five-spoke steering wheel.

- In-built hub fits standard 3/4" tapered shaft.
- Supplied with black centre cap.



Part No.	Diameter (mm)
JPW19308	340
JPW19309	390

Steering Wheel Spares

- JPW18882 - Hub and button (X63) is made to suit Ultraflex steering wheels for connection to a 3/4" tapered shaft.



Stainless Steel Steering Wheels with Speed Knob - 5 Spoke

Highly polished 316-grade stainless steel five-spoke steering wheel with speed knob to assist with quick rotations of the wheel.

- In-built hub fits standard 3/4" tapered shaft.
- Supplied with black centre cap.



Part No.	Diameter (mm)
JPW19306	340
JPW19307	390

Part No.	Description
JPW18881	Black Centre Ring
JPW18882	X63 Hub & Button
JPW19323	Round Centre Cap - Black
U58078	Round Centre Cap for V32- Black
U58079	Round Centre Cap for V32 - White
U59763	Square Centre Cap for V33 - Black
U60697	Silver Screw Set for Steering Wheel
U60698	Black Screw Set for Steering Wheel



HOW TO ORDER

Select products from the catalogue or through our website using the product categories or search function. Make note of the part numbers to facilitate ordering.

ONLINE



Login to our website
with your customer username & password.

www.jpwmarine.com.au

If you know our product codes, use the
'Quick Order' form for a speedy checkout.

PHONE

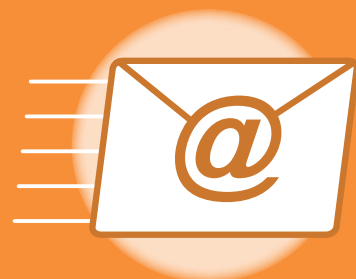


Call us during standard
Western Australian business hours on

(08) 6253 3000

to place order by phone.

EMAIL



Email your order to

orders@jpwmarine.com.au



JPW MARINE

WHOLESALE MARINE SPECIALISTS